



INSTRUCTIONS

BRONCO M.A.S.S. PLATFORM

First off, thank you for purchasing Bronco MASS Platform from AAL! We greatly appreciate your trust in our company. We take that purchase and your commitment to us very seriously. If you have any questions along the way, please don't hesitate to give us a call at 385.202.4188.

Tools Required:

There is more than one tool for every job, but below is the list of tools we use for this installation.

- Ratchet
- 10mm Socket (or Wrench)
- 4mm Allen Socket (or wrench)
- 5mm Allen Socket (or wrench)
- Medium Strength Threadlocker (ex. Blue Loctite)

Hardware Included:

M8x20 Button Head Bolts	4	M6 Nylon Lock Nuts	2
M6x8mm Flat Head Bolts	24	Coin Magnets	8
M6x14mm Flat Head Bolts	18	Magnet Adhesive Patches	8
M6x14 Button Head Bolts	2		

Step 1 - Teardown

Before installing your new storage platform, we first need to remove some of the factory cargo area components. Start by prying open the plastic cover on each of the tie down points identified by the arrows in image 1. Each cover will expose two 10mm headed bolts. Remove the two bolts for each tie down point and set them and all hardware aside. They will not be reused.

Image 1



Next, remove the carpeted panel and set aside. Your cargo area should now look as shown in image 2.

Image 2

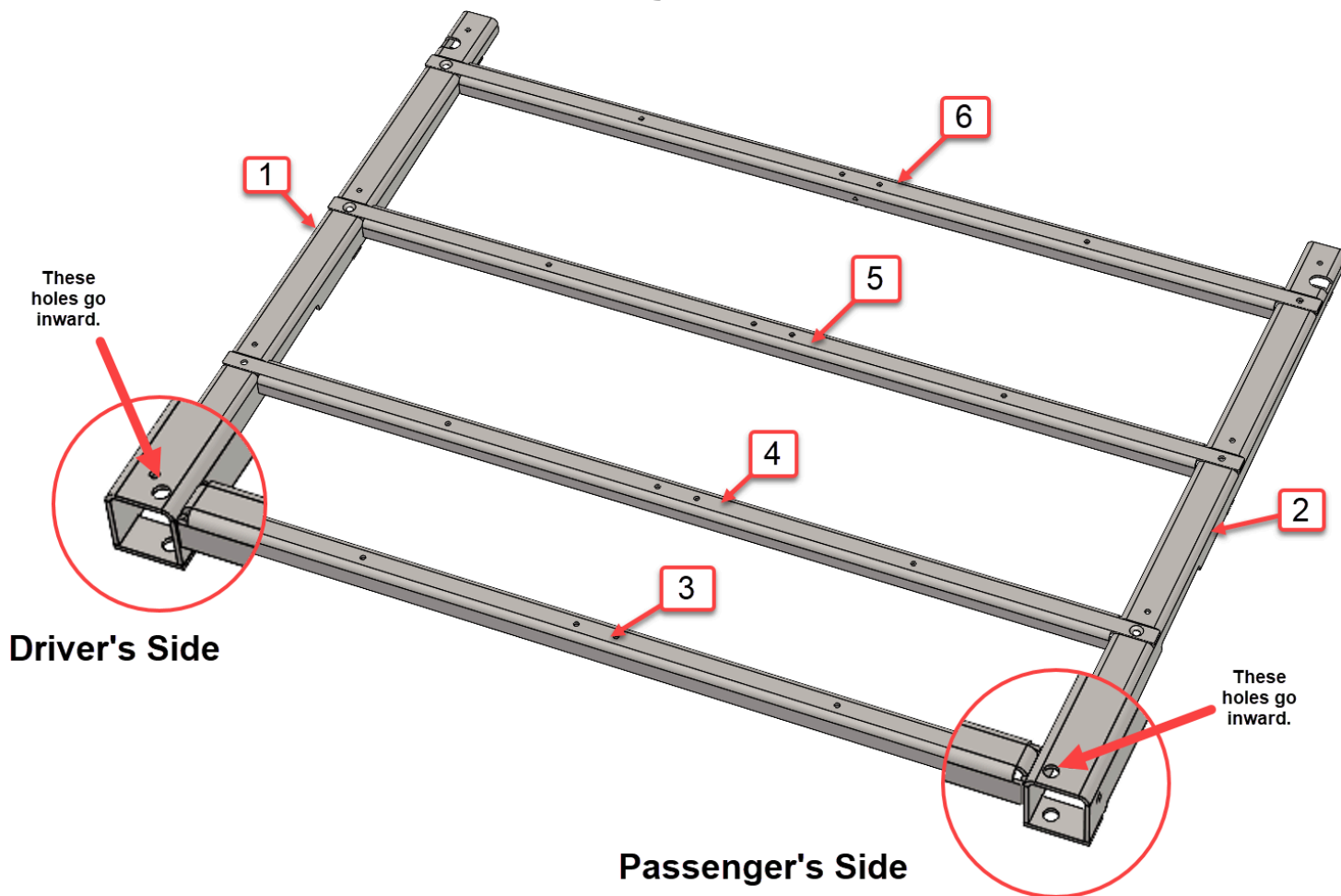


Step 2 - Build Support Structure

Next, we will assemble the structure of the MASS Platform. These steel rails sit below the main panels and provide the strength in the system. They are best assembled outside of the vehicle on a bench or tabletop for easier access.

Assemble your rails as shown in diagram 1. Pay attention to properly locate rails #1 and #2. The holes identified with bubble callouts in diagram 1 go inboard on each side.

Diagram 1

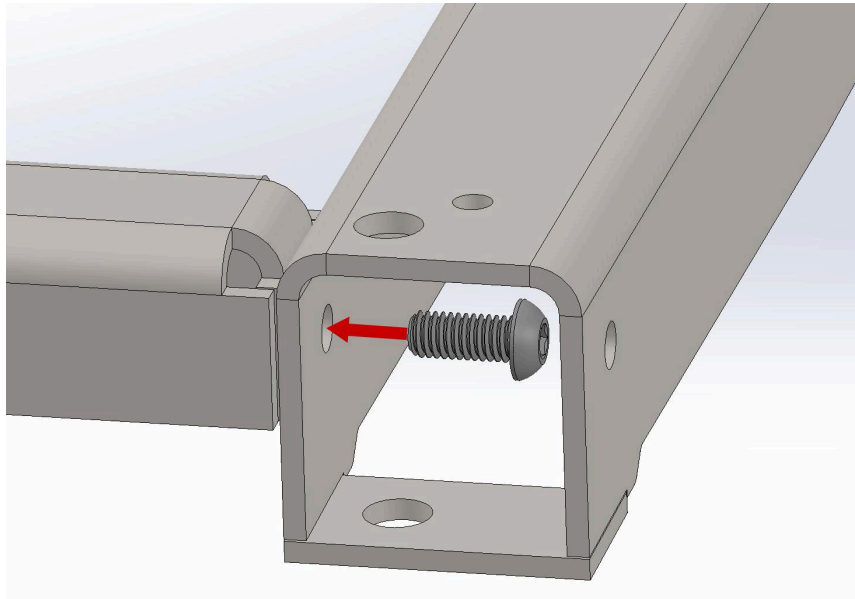


Next, we will secure rails 4, 5, and 6 to the outer rails using (6)M6x14mm Flat Pan Head Bolts. You will use the M4 Allen Socket/Wrench for the bolts. See *diagram 1*.

Lastly, using (2) M6x14 Button Head Bolts and Nylock nuts, attach rail 3 in between the side rails in the rear most position. The bolts should be installed as shown in diagram 2. **Note** - you can access the head of the bolt through the access hole in the outside of the rail. Insert your M4 Allen Wrench through the access hole to tighten the bolt. Repeat this process for the opposing side. Once tight, rotate rail 3 to make it flat as compared to the other rails. The platform panels will flatten it out perfectly when they're installed in the next steps.



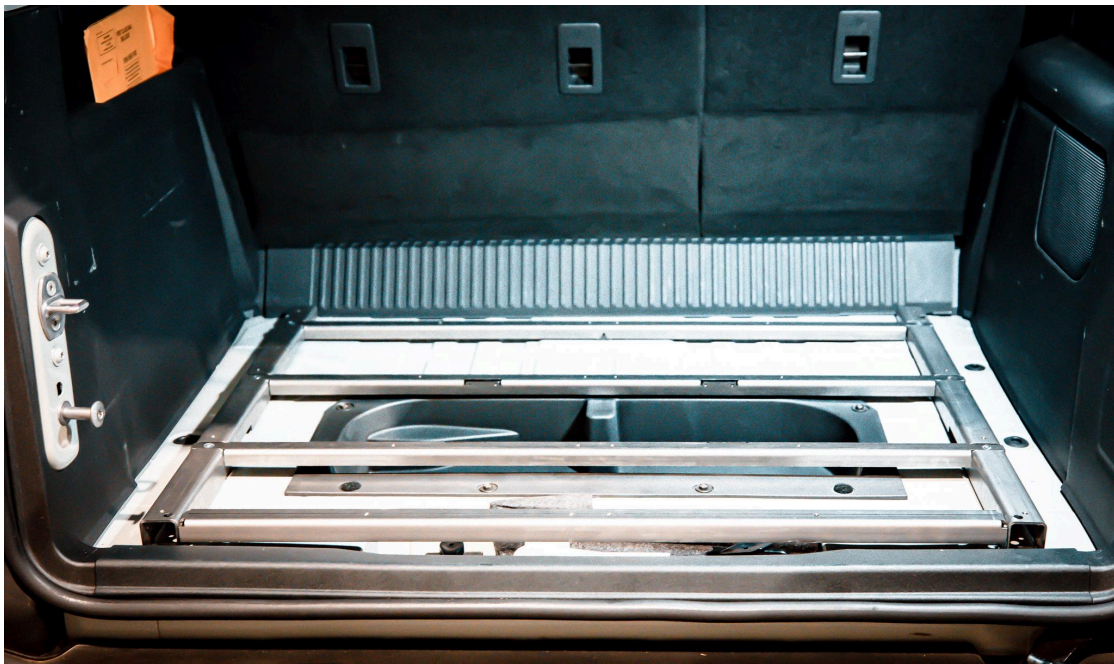
Diagram 2



Step 3 - Install Rails into Bronco

Now, take rail assembly to the rear of the Bronco and lay it on top of the corresponding holes in the floor. It should look as shown in image 3. **Note** - The taller ends of the side rails go toward the rear of the vehicle.

Image 3



Next we will secure the rail assembly to the floor of the Bronco using (4) M8x20mm Button Head Bolts and an M5 Allen Wrench/Socket. The rear two bolts will not go in from the top, so it may be easier to lift up the rear corners and insert the bolts, as they must be inserted from the open end of the rail. The front two bolts will be installed from the top. See examples in diagrams 3&4. Leave these bolts loose at this point. Repeat for all four corners of the rail structure.



Diagram 3

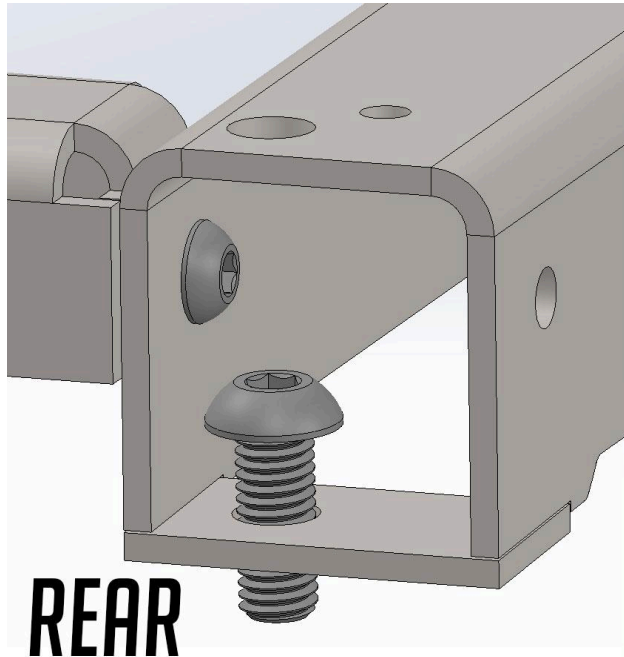
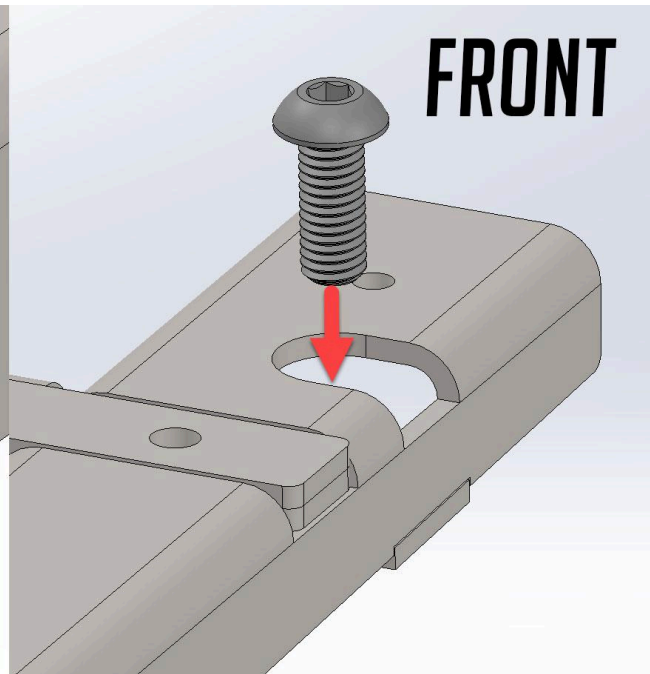


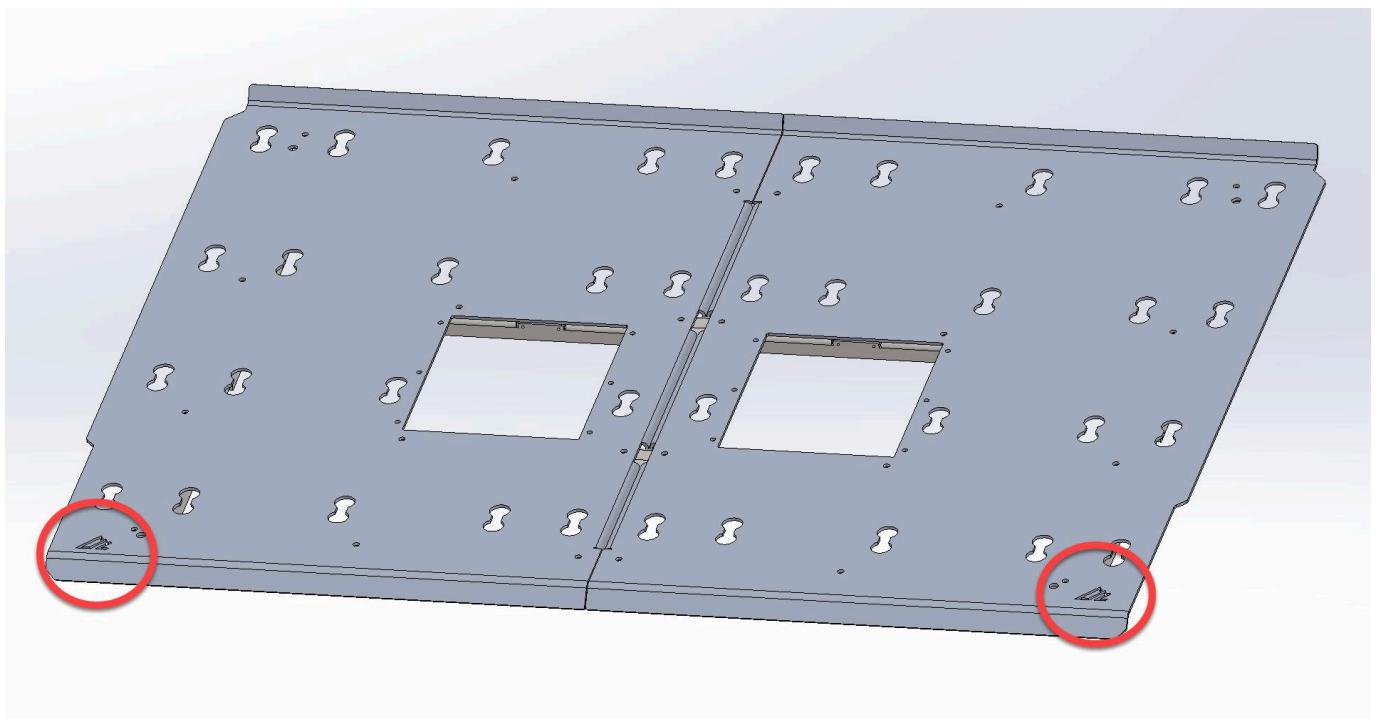
Diagram 4



Step 4 - Attach Platform Panels

The key to this step is to ensure the logos in each panel are on the outboard sides of the cargo area, as shown in diagram 5. The flanges toward the rear of the vehicle bend down, and the ones toward the front will bend up, also shown in diagram 5.

Diagram 5



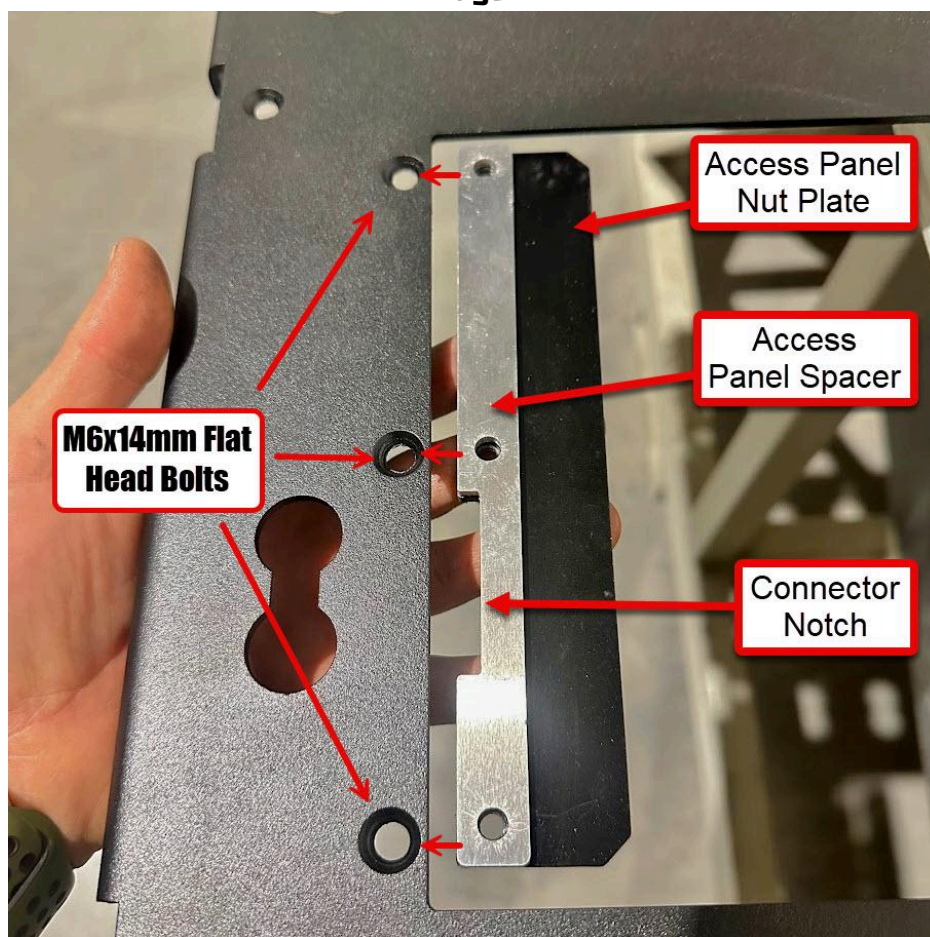
Now, attach the panels using (24)M6x8mm Flat Head Bolts. We recommend applying a medium strength thread locking compound to these bolts (ex. Blue Loc-Tite). You will need the M4 Allen Socket/Wrench to tighten these bolts. *Do not tighten any of these bolts until they are all started.*

Important: Once all of the M6 Flat Head Bolts are tight, you can then tighten the main mounting bolts we left loose in the previous step. You can access the (4) M8 bolts through the access holes directly above the top of each bolt using the M5 Allen Wrench.

Step 5 - Attach the Access Panels

The access door components can now be attached to the platform. To do so, locate (4) Access Panel Nut Plates and (4) Access Panel Spacers. Install them using (12) M6x14mm Flat Head Bolts and an M4 Allen Socket/Wrench. See *image 4* for identification and orientation. **Note** - pay attention to the connector notches; make sure they line up with the connector holes in the platform.

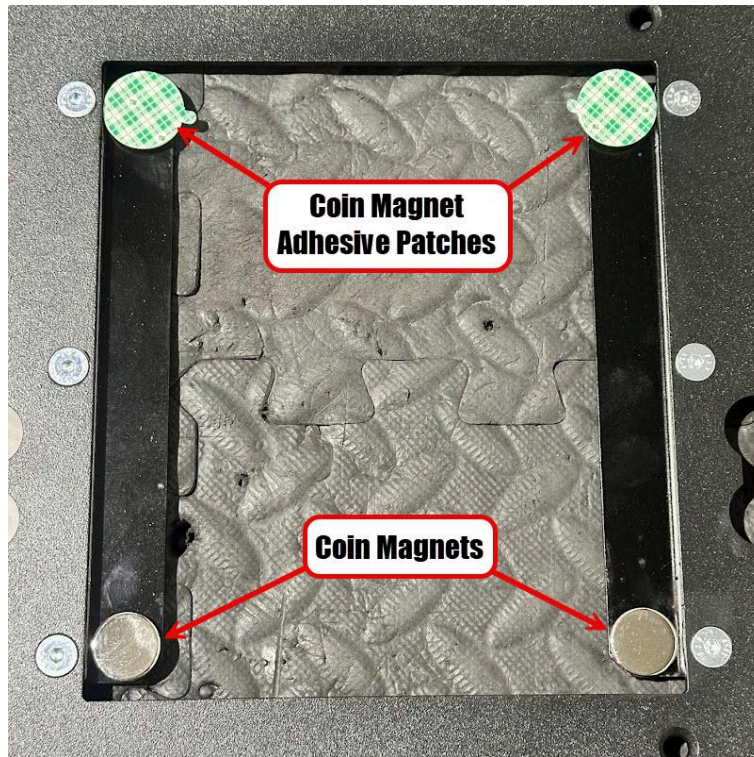
Image 4



Next we will attach the coin magnets for the access panels. To do so, place one magnet on each end of the Access Panel Nut Plates. *Clean the top side of the magnets with some wax/grease removing solvent to ensure the adhesive patches stick well.* Stick an adhesive patch to the top side of each of the magnets. See *image 5* for example. The bottom of the photo shows the magnet location, and the top shows how the adhesive patches should be installed to the magnets.

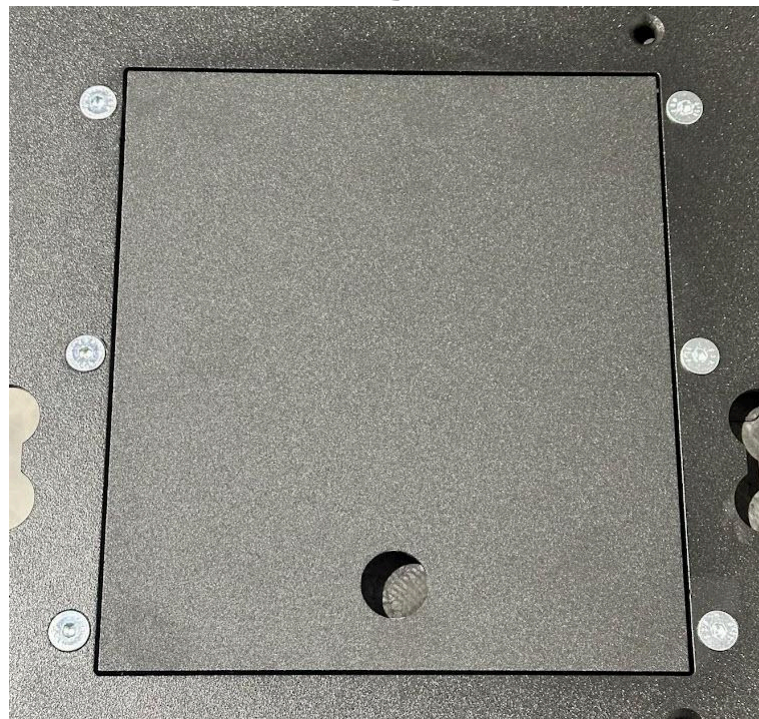


Image 5



Finally, after cleaning the corners of the access panels with solvent to make sure they stick well to the adhesive patches, remove the contact paper from the adhesive patches and set the access panels in place. Apply some firm pressure to the corners, sticking the magnets to the access panels. When finished, it should look as shown in image 6. This completes the installation of the Bronco MASS Platform!

Image 6



Step 6: Share Your Photos

We take great pride in building our products and we hope that pride extends to you after installing your Bronco MASS Storage Platform. If you are able to share your photos online (Facebook and Instagram), please tag **@AmericanAdventureLab**. We would love to see how it turned out and give you some reciprocal attention in return!

Thank you!

Thank you again for your purchase. At American Adventure Lab, we strive to improve anywhere we can. If you experience any issues with this product or these instructions, please let us know.

If you have any questions or concerns, please don't hesitate to reach out to us at 385.202.4188 or via email at Support@erp.adventurelab.com.

